

**E. Optional Accessories**

1. Growing Sponge D65



2. 50W Water Auto Heater



3. Black Cloth Cover



4. OPCOM Link Box



**F. Maintenance**

**F1. Add Water**

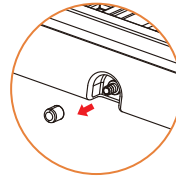
- 1. Measure the pH/EC value every week and add water to achieve the vlaue balance

**F2. Change Water**

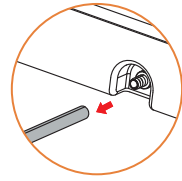
- 1. After a cycle of planting, you should change water or clean the unit(Fig1)
- 2. When change water, you can use water outlet on the left side to leak the water. Plug out plastic lid(Fig2), plug in water pipe(Fig3), then plug out water tank inside stopper.(Fig4)
- 3. After drain the water, please wipe off the water tank.



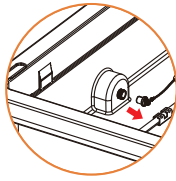
(Fig1)



(Fig2)



(Fig3)



(Fig4)

**F3. EC / pH Meter Use and Calibration**

- 1. Everytime you use the EC/pH Meter, please wash electrode by regular water and keep it dry.
- 2. Cover the electrode protective cap when not in use.
- 3. Turn off the meter when not in use for an extended amount of time.

**G. Troubleshooting**

Issue	Checkpoints / Solution
Lamps not lighting up	<ul style="list-style-type: none"> <li>Make sure all power cables are connected.</li> <li>Make sure Power button is ON.</li> <li>Make sure LED status is ON</li> <li>If LED Status is on HI or LOW mode, the lamp has off time, during 24-hour cycle.</li> </ul>
Pump has a buzzing sound	<ul style="list-style-type: none"> <li>Pump may give off a buzzing sound in the beginning due to air inside the pump. After a minute with water running through the pump, this could be reduced.</li> </ul>
The lamp/ pump stop after hours	<ul style="list-style-type: none"> <li>Control Box is designed with Auto, HI and LOW modes, which turn the lamps and the pump on and off at certain in tervals. It simulates an outdoor daily cycle to offer the best growing condition</li> <li>Rotate the ring at the front end of the pump clockwise or counterclockwise to get the most suitable water flow</li> </ul>

**H. Q&A**

Question	Answer
When should I use the insect net?	For better growing and avoid insect and diseases, we offer high density insect net. (even small insects can not go through ). We suggest you can put on the insect net during the whole growing stage.



For more information, please visit  
[www.opcomfarm.com](http://www.opcomfarm.com)

# GrowBox2

Free Stackable Farming

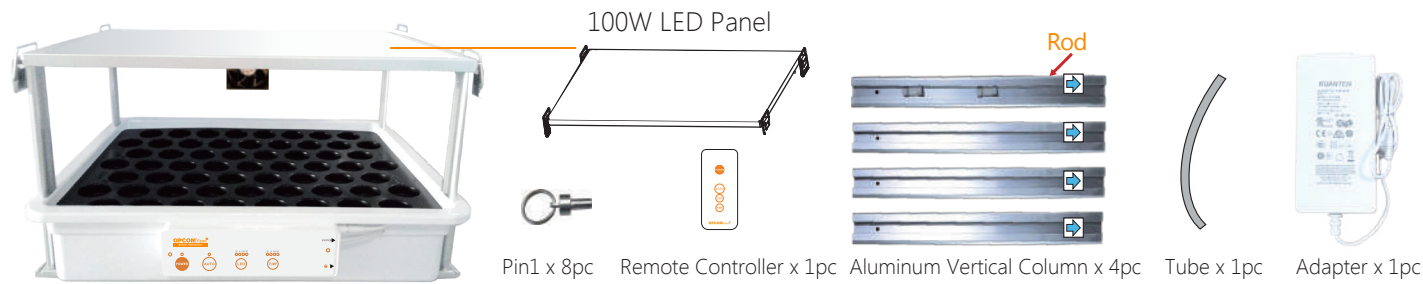


Quick Guide Manual

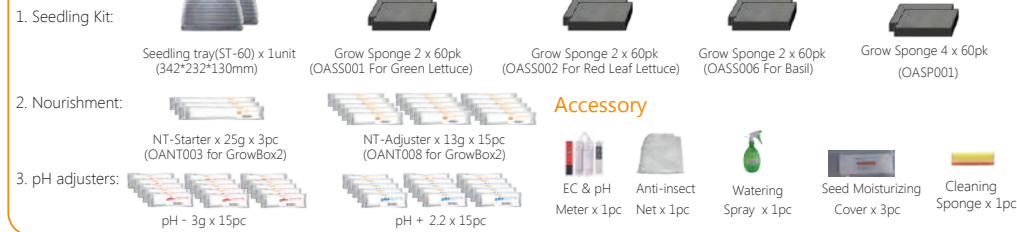
Thank you for purchasing OPCOM Farm GrowBox2, the indoor hydroponics growing system. It is designed with easy to use and efficient growth by one-touch AUTO mode. It holds up to 59 plants capacity. Read the quick guide carefully before setting it up. For detailed user manual and assembly video, please visit Official Website: <http://www.opcomfarm.com>.

### A. Assembly

#### A1. Remove all the parts from box and check all the accessories



#### Grow Kit

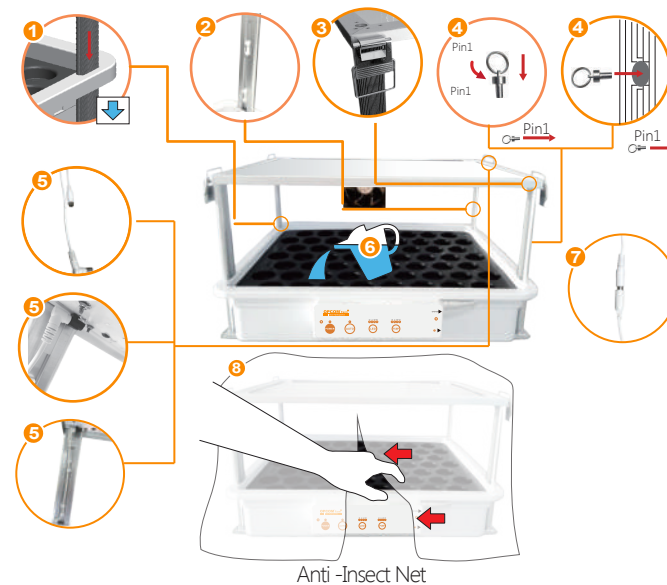


#### Manual



#### A2. Assemble GrowBox2

1. Install Rod A at the rear right corner.
2. Insert other 1 Vertical aluminum rods to each corner of the box and follow the arrow on the bar to assemble.
3. Install the top LED Panel and position in the indicated location by following the arrow on the bar.
4. Insert Pin 1 fully into the right hole in aluminum frame.
5. Connect the LED cable to the LED Panel.
6. Fill 6.6 gallons/ 25L (80%) water into the box.
7. Connect the adaptor cable to adaptor.
8. For pest control, we provide high density insect net (even small insects can not pass through). We suggest to put on the insect net during the whole growing period.



#### Chart I: Control Box Mode

Fuction	Status	Operation	Light	Time(On/Off)	Note
Led	Auto	One Click	●	16H/8H	
	ON	One Click	●	24H/0H	
	High	One Click	●	18H/6H	
	Low	One Click	●	10H/14H	
	OFF	One Click	●	0H/24H	
Pump	Auto	One Click	●	12 Cycles/ day	* 10 mins/cycle
	ON	One Click	●	48 Cycles/ day	* 10 mins/cycle
	High	One Click	●	4 Cycles/ day	* 10 mins/cycle
	Low	One Click	●	2 Cycles/ day	* 10 mins/cycle
	OFF	One Click	●	0 Cycles/ day	

\* Most plants can be grown using the AUTO mode.  
\* Remote controller support wireless remote control.

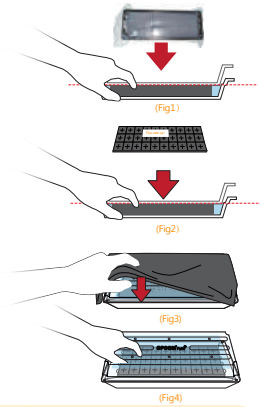
\*a. When Power On, press hold POWER button until 1 beep sound (Less than 2 second) to turn off the power.  
b. When Power On, press hold POWER button until 2 beep sound (About 5 second) to reset timeline to auto power on (On/Off 16H/8H).  
\*a. When Power Off, press hold POWER button until 1 beep sound (Less than 2 second) to turn off the power.  
b. When Power Off, press hold POWER button until 2 beep sound (About 5 second) to reset timeline to auto power off (On/Off 8H/16H).

☑ Please read and follow every steps to avoid any malfunction.

### B. Seedling

#### B1. Sprout Stage

1. Add water to the seedling tray, up to the water (red) level.(Fig1)
  2. First time sprout: just open the seedling box and add water. Then go to step 4. (Fig 1)
  3. Second time sprout: Open Grow Sponge package, put each sponge piece into water of seedling tray (make sure the front side with the seed label is side up), press the sponges into water 5 seconds and ensure the sponges absorb water completely. Put seed moisturizing cover on the sponges.(Fig2)
  4. Place the seedling tray with cover in the shade.(Fig3)
  5. Suggest use watering can spray water to sponges and keep them wet everyday.
  6. During 0 ~ 7 days, find the sprouted ones in the tray; pick them out, and move them into product (make sure the sponges lineup with the black dot on the partition)(Fig4) and to next stage: B2. Young Plant Stage.
  7. Discard unsprouted sponges after regular germination time.
- \* Different plant may have different germination time, please check before plant.



#### Chart II: Plant Stage

Lettuce, Basil	Planting Time	LED Mode	Pump Mode	Nourishment	T (°F)	RH	EC	pH	Notes
Sprout Stage	Day 0~7	N/A	N/A	N/A	68°F - 77°F	80%	0.5-1.0	5.5-6.5	
Young plant stage	Day 3~14	ON	ON	NT-Starter	59°F - 86°F	45%-70%	1.0-2.0	5.5-6.5	
Growing Stage	After Day 14	Auto	Auto	NT-Adjuster	59°F - 86°F	45%-70%	1.0-2.0	5.5-6.5	

\* Please keep the seeds in refrigerator if you don't use it, recommended temperature is 41°F-50°F  
\* For your expected plant amount, you can refer to the sprout rate of 1st planting cycle.  
\* If you need more planting information, please visit [www.opcomfarm.com](http://www.opcomfarm.com) and read "Plant Q&A".

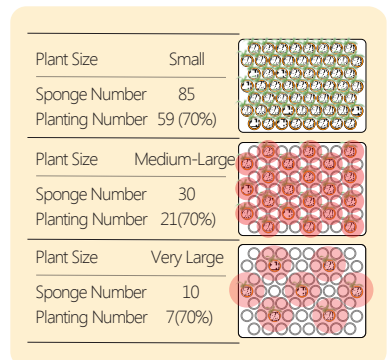
#### B2. Young plant stage

1. In each sponge, keep the strongest and thicker ones and discard others.
2. Add 6.6 gallons water to the water tank.
3. During young plant stage, turn on LED and Pump. Please refer to the ChartII.
4. Add NT-Starter into the water tank and ensure EC value between(=1.0-2.0mS/cm)
5. Ensure pH between 5.5-6.5 (adjust by pH+/-). For EC& pH adjustment instruction, please refer to following Chart at below.

Status	0.0-0.5	0.5-1.0	1.0-1.5	over 2.0
NT-Adjuster	(Add 2pcs)	(Add 1pcs)	Standard range	Add water

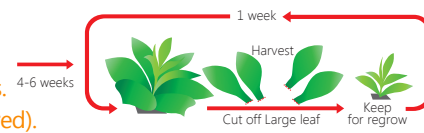
  

Status	4.0-4.5	4.5-5.0	5.0-5.5	5.5-6.5	6.5-7.0	7.0-7.5
pH+	(Add 3pcs)	(Add 2pcs)	(Add 1pcs)	Standard range		
pH-				Standard range	1pc	2pc



#### B3. Growing Stage

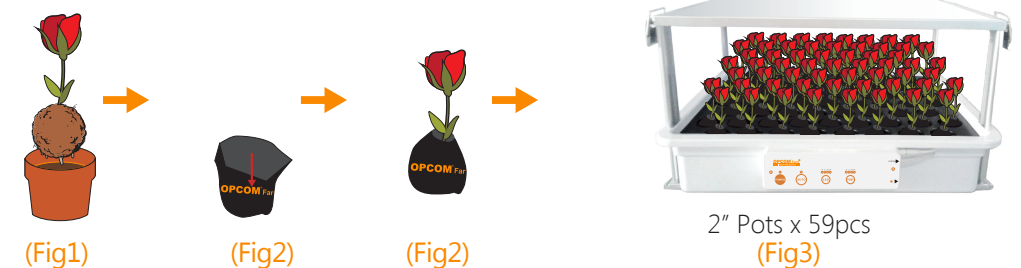
1. When plants grow to over 2 inches height, switch control box to auto mode. Please refer to Chart II
2. After 4-6 weeks, harvest the larger plants for consumption and keep smaller plants growing.
3. To save time, sow the new seeds in sprout tray one week before you restart the planting process.
4. When water less than water level(red) on the tank, please refill new water until over water level(red).



### C. Planting

Plant Process: Buy plants from local stores.

1. Soil Freer: Removee pot(Fig1) and put into filter bag(Fig2)and then move to the product(Fig3).



### D. Sprouts and Microgreens.

1. Before your next seedling, take advantage of the seedling tray for sprouts and microgreens, it takes 7-10 days to harvest.
2. Put seeds in warm water(recommended temperature is 95°F, not over 104°F) for 24 hours.
3. Put the wet paper towels into the tray.
4. Place the seedling tray with cover in the shade or cover it with black cloth.
5. After germination, during the growing stage, keep green sprout under the light and white sprout in the shade or cover it with black cloth; In 7-10 days, you can harvest.

